



Accreditation Presentation to the IESS Committee – November 4, 2015

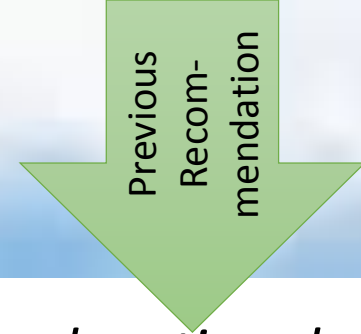
President Marvin Martinez

Vice President Laura Ramirez

Faculty Accreditation Chair Barbara Dunsheath

Accreditation Liaison Officer Carol Kozeracki

I.A Mission



East Los Angeles College empowers students to achieve their educational goals, to expand their individual potential, and to successfully pursue their aspirations for a better future for themselves, their community and the world.

Goal 1: *Increasing student success and academic excellence through student-centered instruction, student-centered support services, and dynamic technologies.*

Goal 2: *Increasing equity in successful outcomes by analyzing gaps in student achievement and using this to identify and implement effective models and programming to remedy these gaps.*

Goal 3: *Sustaining community-centered access, participation, and preparation that improves the college's presence in the community, maximizes access to higher education and provides outlets for artistic, civic, cultural, scientific and social expression as well as environmental awareness.*

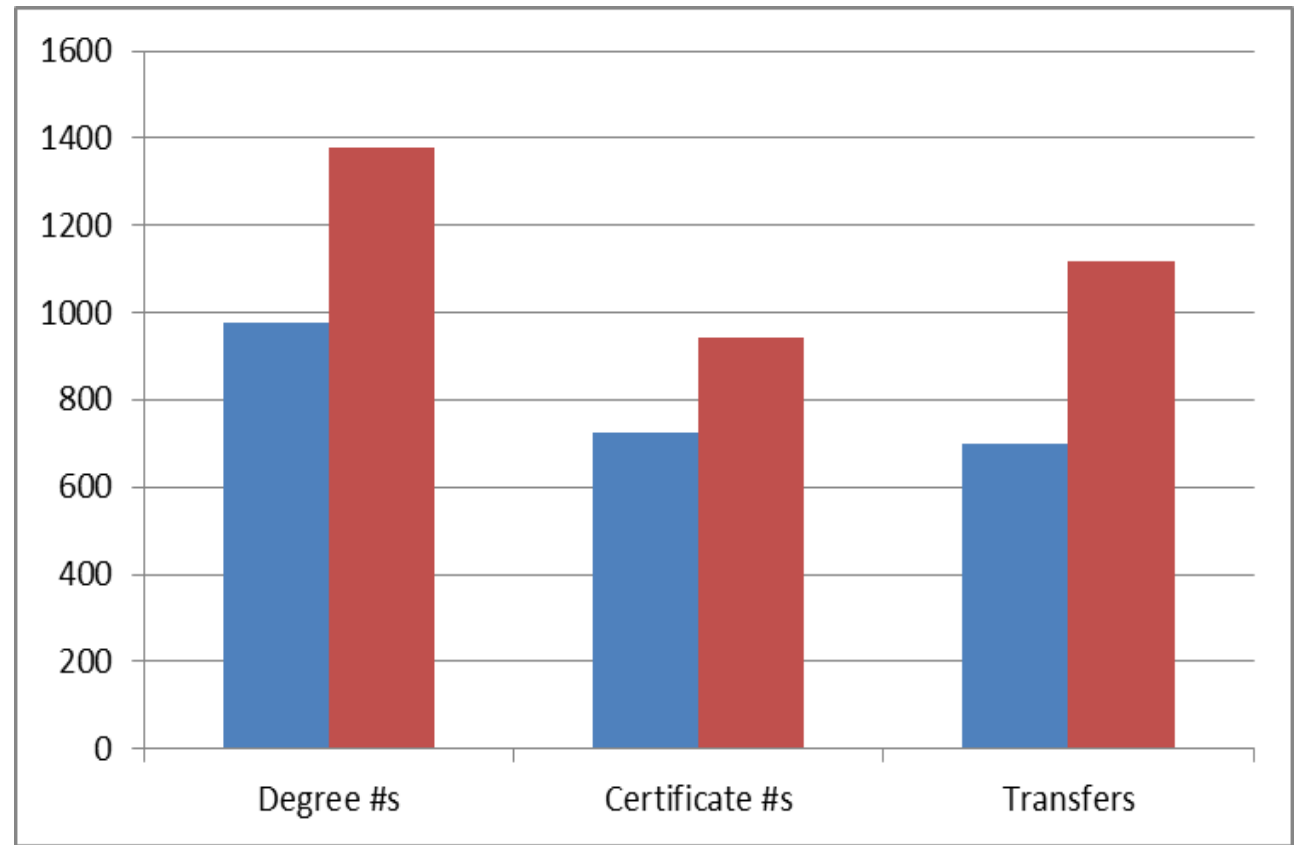
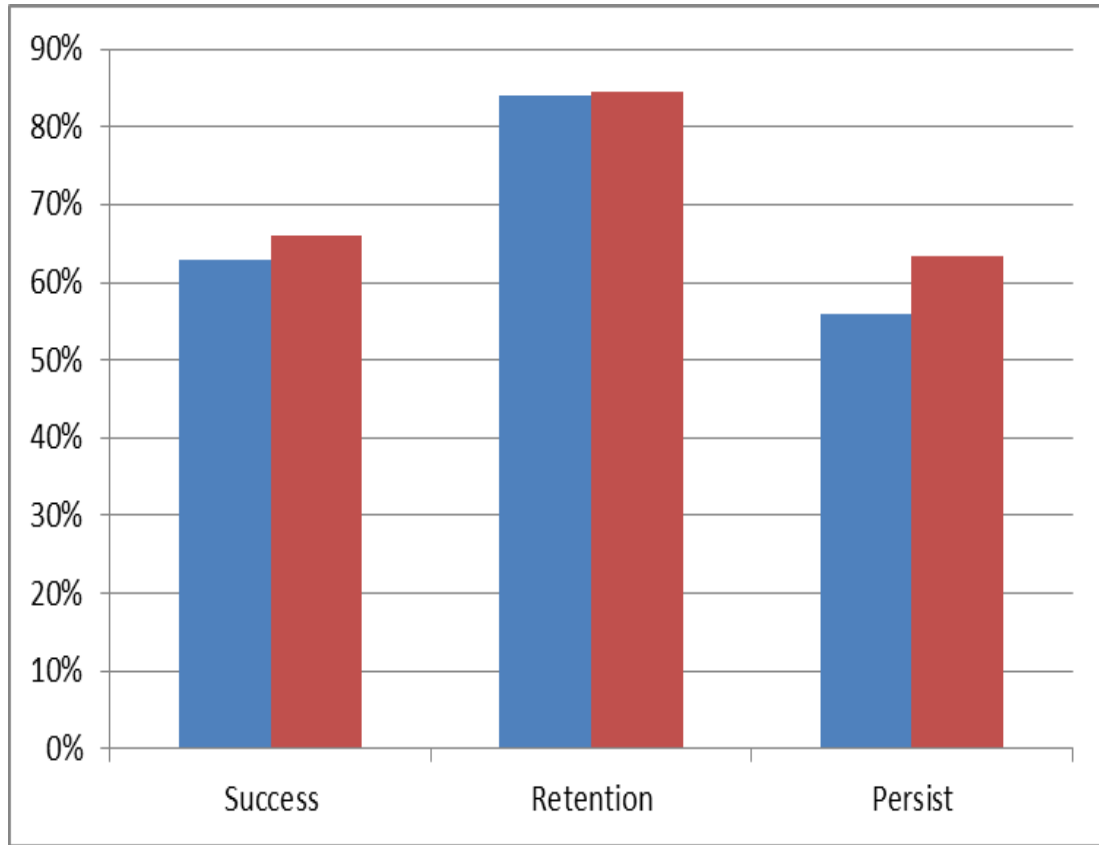
Goal 4: *Ensuring institutional effectiveness and accountability through data-driven decision-making as well as evaluation and improvement of all college programs and governance structures.*

In collaboration with the District's Mission, ELAC is committed to advancement in student learning and student achievement that prepares students to transfer, successfully complete workforce development programs, earn associate degrees, and pursue opportunities for lifelong learning and civic engagement.

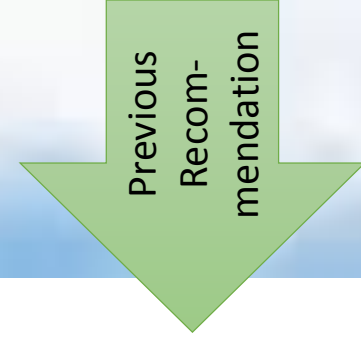
Approved BOT July 8, 2015

I.B - Institutional Effectiveness

Institution-Set Standards vs. **Actual (2014)** Performance



Program Review



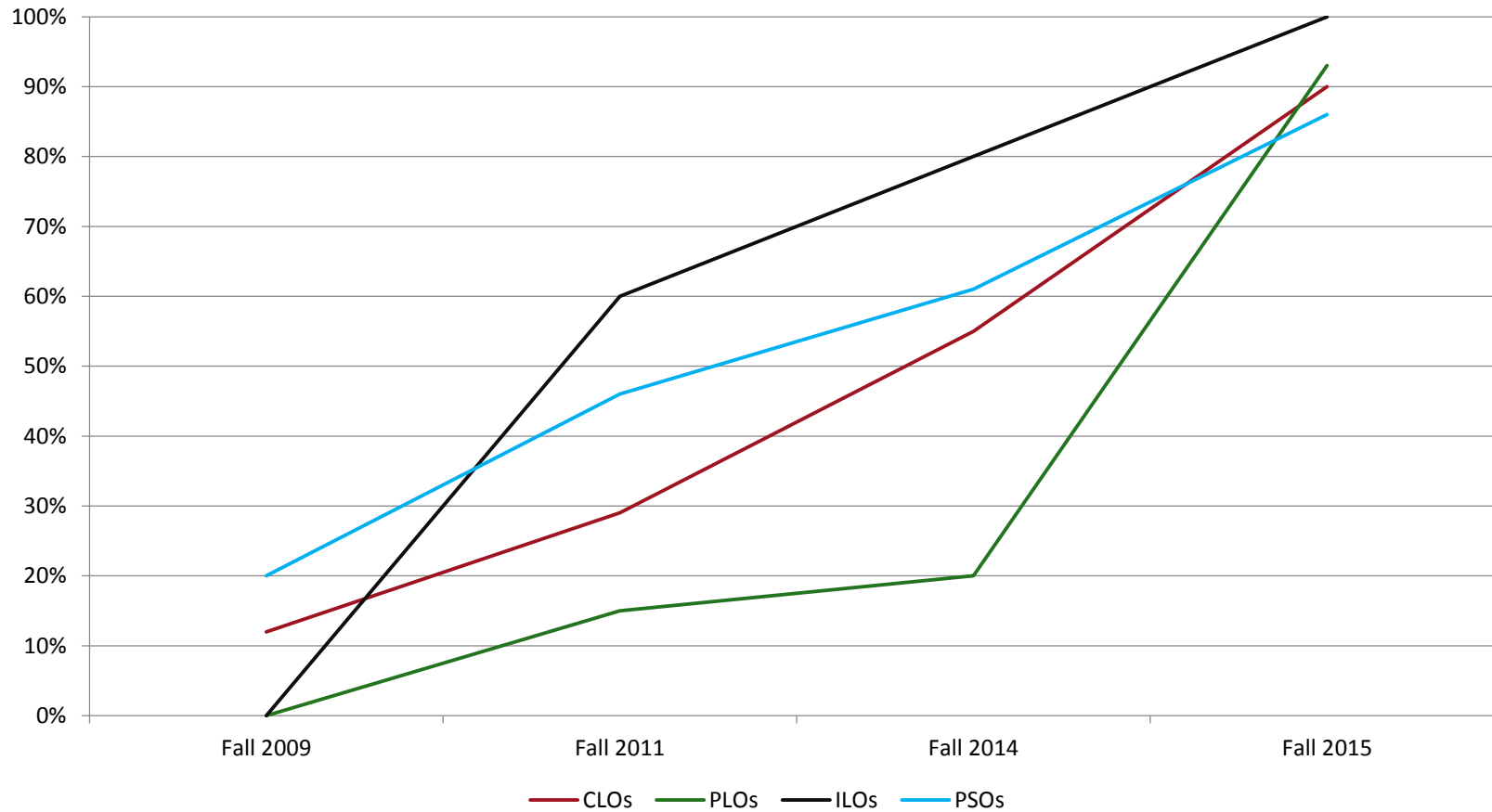
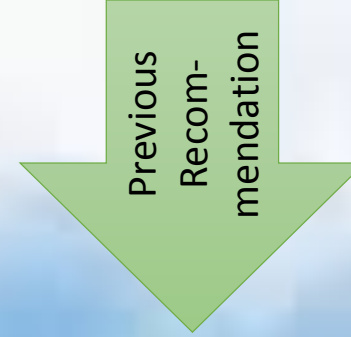
Improvements

- 100% completion
- OIE(A) training for Chairs
- Integrated Planning
- Review involved multiple perspectives; completed in one year

Continuous Improvement

- Annual updates
- Cluster Reviews
- Link w/resources
- College-wide review

I.B Institutional Effectiveness



98.6%
Full Time Faculty
Participated in CLO
assessment
Spring 2015



II.A Instructional Programs

Examples of Excellence

- Vincent Price Art Museum
- STEM Mentor Program
- Technology and Logistics
- National Speech Team Awards
- John Delloro Program
- Law Pathway
- FYE Program
- Architecture Design Village Competition



QFE

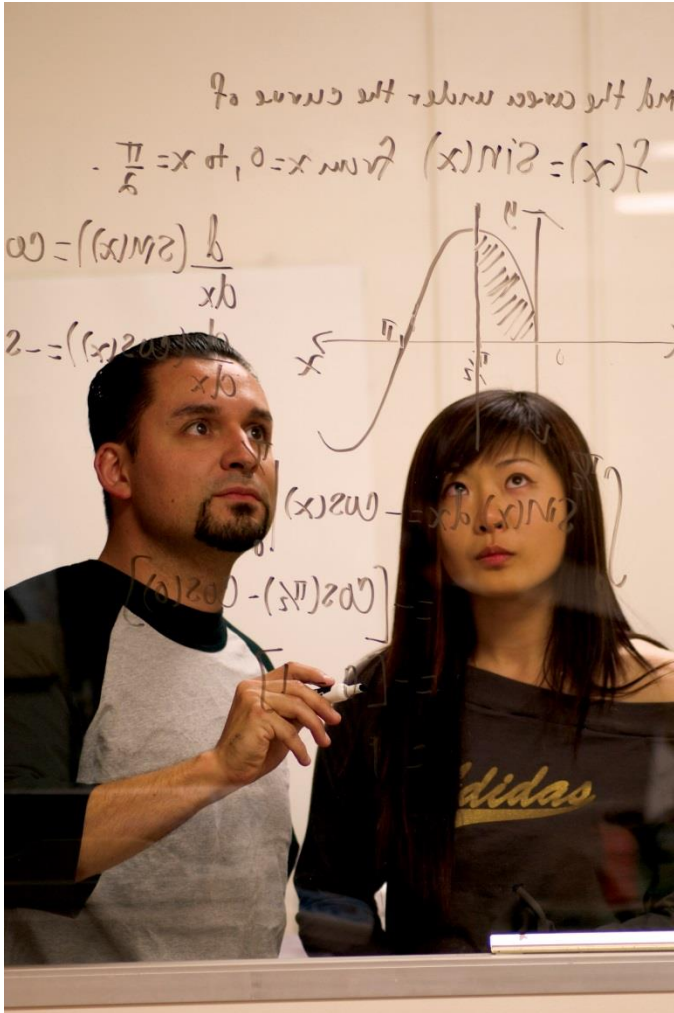
- Basic Skills Pipeline
- Transfer Culture

Academic
Rigor and
Quality



II.B Library & Learning Support

2014 Student Survey	ELAC	District
Very Satisfied with Library	57.4%	55.2%
Satisfied	29%	28.5%
Not Satisfied	4%	4.3%
Not Applicable	7.7%	9.1%





II. C Student Services

Previous
Recom-
mendation

EASTLOS ANGELES COLLEGE **Counseling**

ALL NEW STUDENTS **must** APPLY ONLINE AND THEN COMPLETE...

A + **O** + **C**
Assessment **Orientation** **Counseling**

CHECK OUT THE **Jumpstart** FLYER FOR MORE INFORMATION

QFE
Welcome
Campaign

Access and
Support for
ALL
Students

III. Resources



Planning and
Fiscal Responsibility

IIIA. Human Resources

- Student growth of 7% over two years - 70 faculty and staff hired
- Staffing requests come from program review and annual update plans
- Human Resources Committee prioritizes classified hires

IIIB. Physical Resources

- Opening Student Success building - largest in District - 150,000sq ft
- Opened 20,000 sq. ft. of additional office space at Corporate Center site
- Total cost of ownership used for facilities planning and expenditures

IIIC. Technology

- Over 2,600 computers, 40 labs and 196 smart classrooms
- Dynamic website compatible with all mobile devices
- DE Professional Development – Techfest and migration to Canvas

IIID. Financial

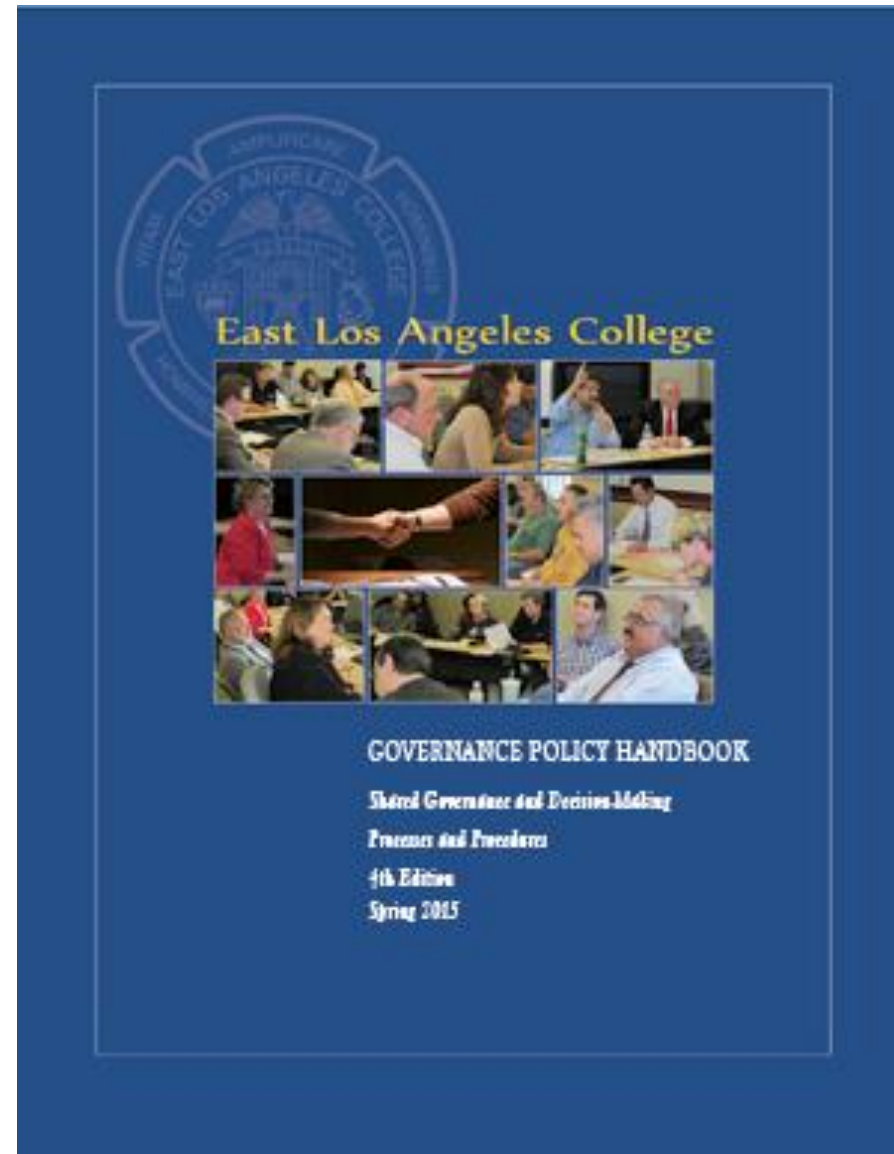
- Fiscal outlook includes healthy reserve over multiple years
- Budget development based on program review and annual unit updates
- Grants and special funds support innovative programs

Governance Policy Handbook 4th Ed.



Planning, Implementation, & Evaluation

- Revised Org. Charts
- Governance and Planning Process Chart
- 7-year cycle
- Committee Roles
- Revised Budget Timeline
- Human Resource Committee



Previous
Recom-
mendation



Action Plans and Quality Focus Essay

- **ACTION PLANS**

- SLO Sustainability
- Professional Development
- Communication

- **QUALITY FOCUS ESSAY**

- Strengthening the Transfer Culture
- Streamlining the Basic Skills Math Pathway
- Creating a Welcome Campaign

